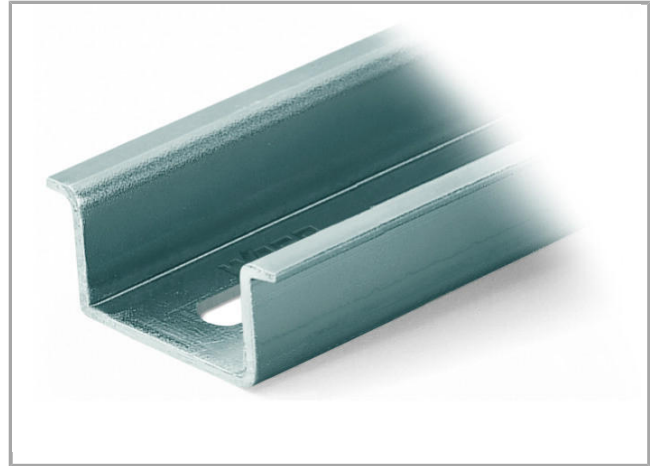
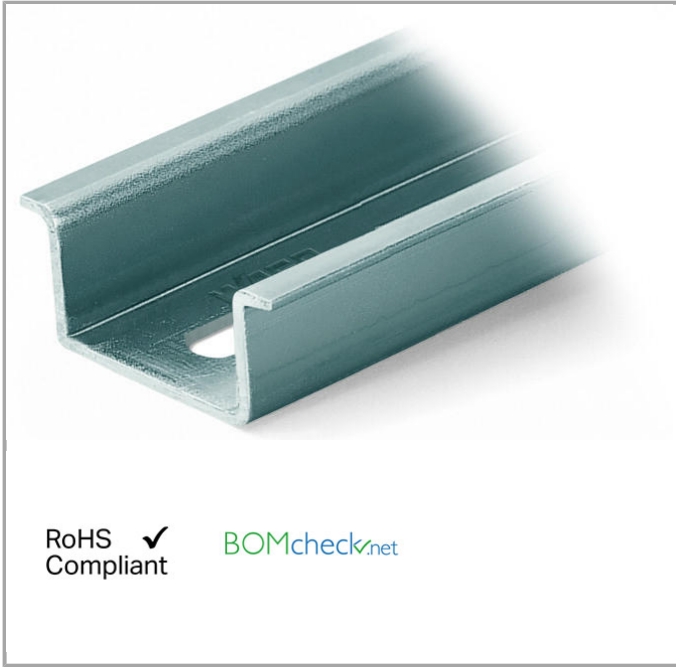


**Data sheet | Item number: 210-508**

Steel carrier rail; 35 x 15 mm; 1.5 mm thick; 2 m long; slotted; galvanized; similar to EN 60715



210-508



**Data**

**Technical Data**

Main product function

Mounting Accessories

**Geometrical Data**

Abmessungen B x H x T (mm)	(2000 x 15 x 35) mm
Abmessungen B x H x T (inch)	(78.74 x 0.591 x 1.378) inch
Width	2,000 mm / 78.74 inch
Height	15 mm / 0.591 inch
Depth	35 mm / 1.378 inch

**Material Data**

Weight	1245 g
--------	--------

**Commercial data**







Product Group	2 (Terminal Block Accessories)
Country of origin	IT
GTIN	4017332791304
Customs Tariff No.	72169180000

## Compatible products

## Marking accessories

	<b>Item no.: 210-708</b> Labels; for TP printers	210-708
	<b>Item no.: 210-808</b> Labels; for Smart Printer	210-808

## assembling

	<b>Item no.: 209-137</b> Mounting adapter; can be used as end plate; 6.5 mm wide	209-137
	<b>Item no.: 210-148</b> Angled support bracket; without screw	210-148
	<b>Item no.: 210-149</b> Screw M 5 x 8; for angled support bracket	210-149
	<b>Item no.: 249-116</b> Screwless end stop; 6 mm wide; for DIN-rail 35 x 15 and 35 x 7.5	249-116
	<b>Item no.: 249-117</b> Screwless end stop; 10 mm wide; for DIN-rail 35 x 15 and 35 x 7.5	249-117
	<b>Item no.: 249-197</b> Screwless end stop; 14 mm wide; for DIN-rail 35 x 15 and 35 x 7.5	249-197

## Downloads

## Documentation

## Bid Text

210-508	doc 24.6 kB	Download
---------	----------------	----------

Subject to changes.